

# MONTHLY MEMBERSHIP PROGRESS REPORT

District 307B2

Results as of: 11/30/2023

GMT:

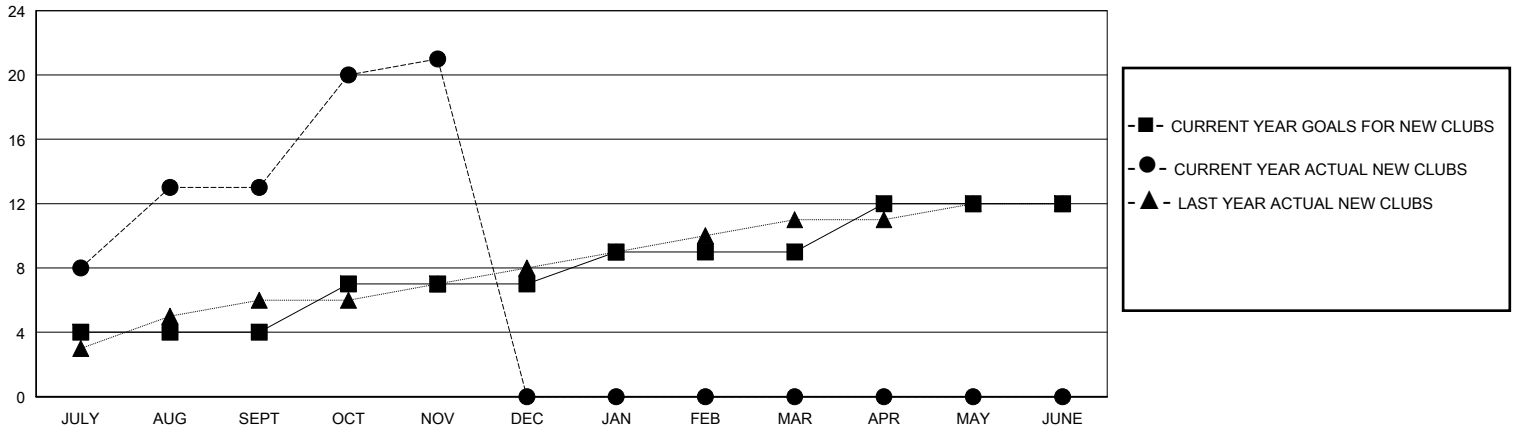
LOCATION INDONESIA

GMT CA

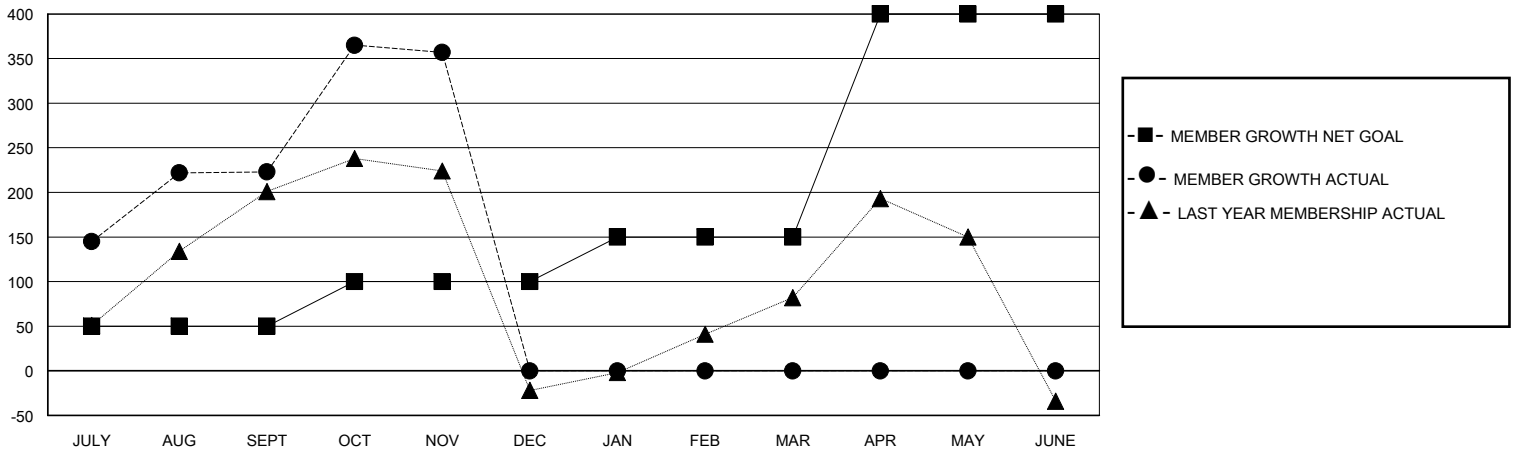
Clubs			
RESULTS FOR 2023-2024			
QUARTER	NEW CLUB GOAL	NEW CLUBS	DROPPED CLUBS
JULY/AUG/SEPT	4	13	2
OCT/NOV/DEC	3	8	0
JAN/FEB/MAR	2	0	0
APR/MAY/JUNE	3	0	0

Members			
RESULTS FOR 2023-2024			
QUARTER	MEMBER GROWTH NET GOAL	MEMBER GROWTH ACTUAL	DROPPED MEMBERS ACTUAL (including transfers)
JULY/AUG/SEPT	50	371	134
OCT/NOV/DEC	50	236	101
JAN/FEB/MAR	50	0	0
APR/MAY/JUNE	250	0	0

GOALS AND ACTUAL NEW CLUBS CUMULATIVE



GOALS AND ACTUAL MEMBERS CUMULATIVE



DROPPED CLUBS: 2

54 CLUBS OF 123 ADDED 1 OR MORE NEW MEMBERS

GENDER DISTRIBUTION

MALE 1,344 (35.82%)  
FEMALE 2,403 (64.05%)

DROPPED MEMBERS

DECEASED	2
CLUB CANCELLED	25
OTHER	208
<b>TOTAL</b>	<b>235</b>

[CLICK HERE FOR CUMULATIVE MEMBERSHIP DATA](#)

TOTAL FAMILY UNIT MEMBERS	724
FAMILY MEMBERS PAYING HALF DUES	396